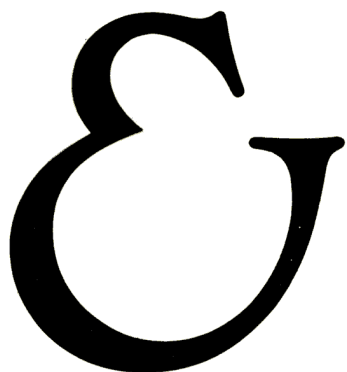


BAROVIER



T O S O  
INFORMA

April 2009

### Credits

Art Direction: Franco Raggi

Graphic Design: Marco Strina

Photography: Marco Magoga Studio Pointer

Preview Printing: Pluscolor

Printing: Grafiche SIZ

Project Manager : Massimo Bovi

Technical Office: Sara Pedrali

## Addendum 2009

ELEVEN NEW FAMILIES: THE NEW ITEMS IN OUR L, S AND T CATALOGUES

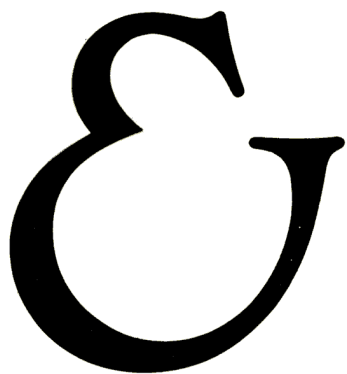
Just nine months after our L, S and T Catalogues came out with their dozen odd new items, the new *Addendum 2009 Catalogue* presents a burgeoning eleven families of products to supplement and enhance our already numerous range of choices, in terms of style, characteristics, and functions.

*Addendum 2009* expands some successful collections and introduces some other totally new ones. They will all satisfy a wide range of different needs with attention placed on saving energy.

*Addendum 2009* is a catalogue full of surprises.



BAROVIER



T O S O  
INFORMA

## THE CATALOGUE

The *Addendum 2009 Catalogue* with its 64 pages, supplements the compendium of Barovier&Toso's production (the L, S and T Catalogues). It will be incorporated in the next version of the full catalogues.

Marco Strina oversaw the graphics, implementing Studio Pointer photographs. The catalogue includes creations by Franco Raggi, Daniela Puppa, Giorgia Brusellini and Alessandro Piva.

It is being presented at EuroLuce 2009, where the Barovier&Toso stand will exhibit all our new items.



## THE COLLECTIONS

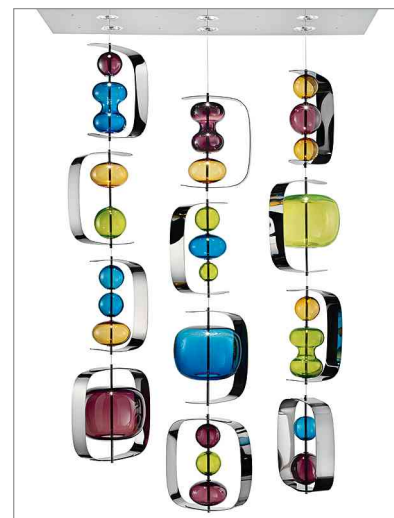
### *Manhattan*

*This screen of light weaves colors through space, in a rhythm of simple, geometric forms.*

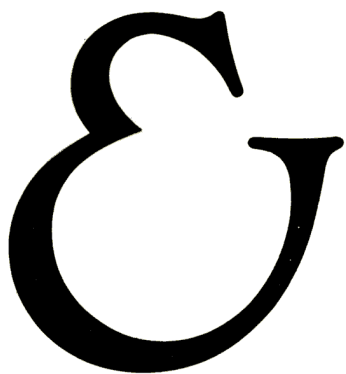
Dark, chrome-plated steel cornices are suspended in space, providing frames where bubbles of multicolored blown glass float in the air. Manhattan also comes in completely white glass, with three different compositions (one, three or four steel cables), and in two heights. Low energy consumption halogen spotlights are built into the chrome-plated slab.

**Design:** Alessandro Piva

**Available colors:** bluastro/violet/liquid green/caramel, white



BAROVIER



T O S O  
INFORMA

### *Matrioska*

*This small invention is halfway between a flying table lamp and a billiard room lamp.*

Large lampshades, ribbed glass, and chrome-plated steel are the characteristics of this family of drop lighting. Four versions come in a straight line with from two to five lights, but there is also a square version with four lights. Matrioska also comes in a one-light sconce. The shades come in black and white, and the glass comes in a range of seven colors.

**Design:** Barovier&Toso

**Available colors:** crystal, grey, light pink, liquid citron, caramel, red, antalia green;

**Shades:** white, black



### *Honolulu*

*Modern restraint embraces the poetry of glass. Geometry and decoration nudge rules and exceptions.*

The Pacific inspired this generously sized hanging lamp with monotone flowers sprouting from the Venetian tradition, which float around it. The white or black shade closed with milky Plexiglas at the bottom, comes in three different diameters; the height can be regulated for all of them. Low consumption light bulbs are recommended.

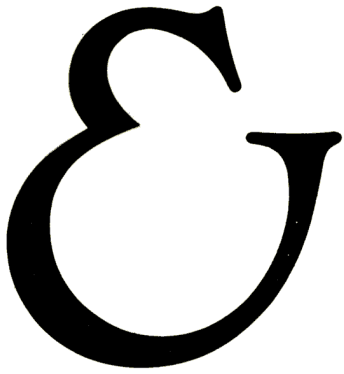
**Design:** Daniela Puppa

**Available colors:** crystal, liquid citron;

**Shades:** white, black



BAROVIER



T O S O  
INFORMA

### *Topkapi*

*If you want to see things differently, sometimes all you need to change is your viewpoint. Topkapi is not really a ceiling light; it's an upside down reading lamp.*

Topkapi is a family of lamps for the ceiling characterized by the contrast between the modern lines in white sanded glass bowl which sends out a soft, diffused light, and the classic pendants in transparent or vividly colored crystal that shine with the brightness of direct illumination.

**Design:** Daniela Puppa

**Available colors:** crystal, bluastro, red, liquid green



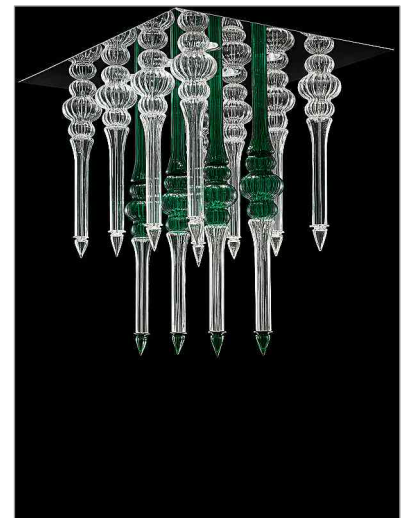
### *Minimal Degas*

*This surprising design is a geological formation in blown glass. It is an airy draping of light and color.*

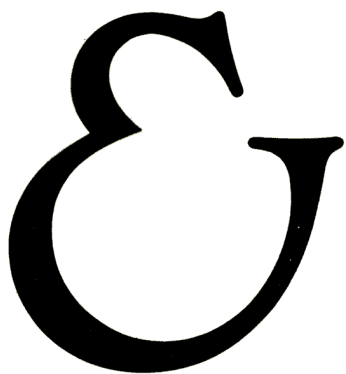
Inspired by a successful lamp and reduced to the bare minimum, Minimal Degas comes in different-sized square and rectangular versions. There are three heights of the two-tone, ribbed glass stalactites. The mounting is chrome-plated and the halogen illumination is low consumption.

**Design:** Giorgia Brusemini

**Available colors:** crystal, crystal/antalia green, crystal/amber, crystal/violet



BAROVIER



T O S O  
INFORMA

### *Monobase/Bibase/Tribase*

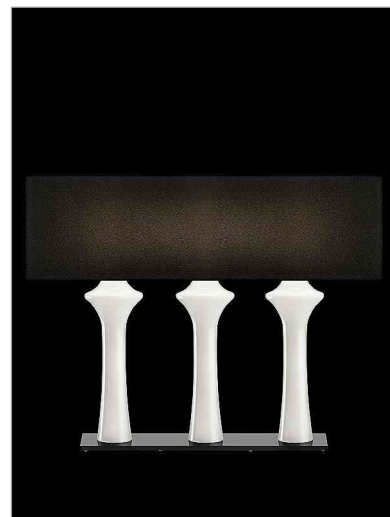
*Neoclassic is Neo again. Spare forms, simple lines, and measured proportions come together in a ceiling light or table lamp.*

Thin tapered columns of blown glass support a single, squared off lampshade over a base of black chrome-plated steel. There are three versions with one, two or three lights, as well as a ceiling variation.

**Design:** Barovier&Toso

**Colori disponibili:** grey, white, black, red;

**Shades:** white, black, white black stripes



### *Nepher*

*The merry lightness of iridescent soap bubbles is rigorously lined up with elementary geometry.*

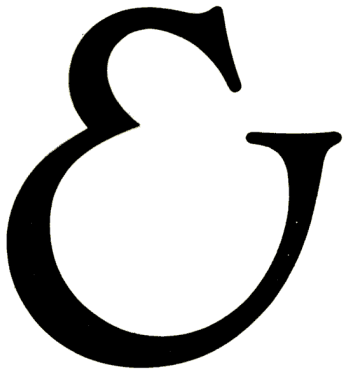
Different sized bubbles made of multicolored blown glass with varying finishes are lined up on the axis of a chrome-plated bar. Nepher comes in a 90 cm (35") and a 120 cm (47") version and is mounted with a chrome-plated slab that holds three or four, low consumption, halogen spotlights.

**Design:** Barovier&Toso

**Available colors:** crystal, crystal/light pink/grey; crystal/bluastro/grey



BAROVIER



T O S O  
INFORMA

### *Vanderbilt*

*Ecological decoration is suspended between the lucidity of its structures and the scintillating reflections of colored glass.*

Ten different lengths of chrome-plated steel arms describe an oval; they support chunky spheres of ribbed glass which contain and diffuse the source of light. Vanderbilt comes in four colors and two heights; also available as wall sconces.

**Design:** Franco Raggi

**Available colors:** crystal, light pink, liquid citron, caramel



### *Domo Rotterdam/Domo Amsterdam*

*The absolute elegance of simplicity in shape is created by the multiplication of simple elements.*

This elegant articulation of the classic chandelier brings to mind two Barovier&Toso lamps: Rotterdam and Amsterdam. The characteristic element is the rostrum with its typical, pointed elements.

This comes in three versions with eight, twelve or sixteen lights and black, white or brown lampshades. The metallic parts are chrome-plated and the electric components are transparent. Their height can be adjusted.

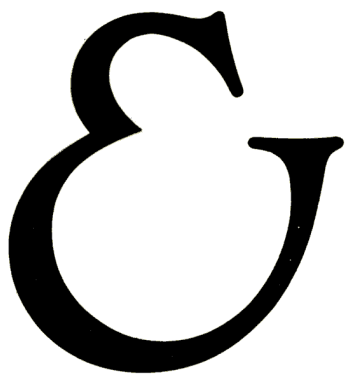


This also comes in a sconce version with one or two candelabra.

**Design:** Franco Raggi

**Available colors:** grey, light pink, liquid citron, violet, caramel; **Shades:** white, black, brown

BAROVIER



T O S O  
INFORMA

### ON-LINE CATALOGUES

The [www.barovier.com](http://www.barovier.com) internet site provides all the catalogues available. You can consult it with display software that lets you leaf through its pages, zoom in close and tight, and download the technical sheets for each collection: the catalogue pages containing the design and ranges of colors. You don't need to install any additional software, unless you haven't already installed Adobe Flash Player, currently found on 98.8% of the world's computers (source: Adobe)

**Press Office: EVDS (+39) 0283241965 [info@evds.it](mailto:info@evds.it)**